

FOLK NOTES

www.souflafolk.com October, 2004

Contemporary, Traditional, Roots and Alternative Music... and stuff like that

ACOUSTIC UNDERGROUND CONCERT SERIES PRESENTS:

Marie Nofsinger

Saturday, October 2nd, 8:00pm

Petite, winsome, lovely with a voice to match. No wonder so many fallen in love with Marie Nofsinger, one of South Florida's most popular folk singers. Marie is a favorite at major festivals and venues in Florida and is a regular in Texas, Nashville and her native New England. Based in



Delray Beach, Marie has been part of the growing number of outstanding folk and acoustic musicians in South Florida for eighteen years. Marie is an extension of a creative universe. Her songs are parables of drifters, waitresses, cowboys and the dreams and disappointments of Americana. What she writes and sings, she has felt and lived. What she shares with her audience is conversation set to music. She started writing music in her New England home and brings traces of those roots and of her world travels into her songs and stories. This is especially so in the music she prepares and performs for children, the toughest and most critical audience.

"Best Local Accoustic Performer". New Times, Miami CD "Boots" - Best Accoustic CD .City Link, Miami 1999. "If you want to take a trip into the soul of America listen to "Boots". Marie is rooted in the tradition of Johnny Cash, Waylon Jennings, and Emilylou Harris. Intelligent, tune smithing, as good as it gets.". Charles Paaassey, Palm Beach Post. "There's a completeness to her music, an attentiveness that catches every layer of existence. The Woodie Guthrie of these times". Sean Piccoli, Sun Suintel

Luna Star Café, 775 NE 125th Street, N. Miami, FL tel: 305-799-7123. Requested Contribution: \$7.00 (\$6.00 Members).

THE SOUTH FLORIDIA BLUEGRASS ASSOCIATION Presents

BLUEGRASS FRIDAY

Featuring:

On The Edge

Friday, October 8th - 8:00 P.M

Bluegrass Friday is the second Friday of each month. This will be the fourth Bluegrass Friday and the fine groups just keep coming. And On The Edge is one of the best in South Florida. If you haven't joined the party at one of these energy filled evenings, you're missing out. The Bluegrass Association has a winner in this venue and is settling in. We might even see Alexis in jeans, a print shirt and a straw hat, but don't hold your breath. Please join us.

Contact: 305-235-8874 or rnyberg@bellsouth.net

<http://www.southfloridabluegrass.org/>

Luna Star Café, 775 NE 125th Street, N. Miami, FL tel: 305-799-7123. Requested Contribution: \$7.00 (\$6.00 Members). <http://southfloridabluegrass.org>

OPEN HOUSE & SONG SWAP

The Folk Club of South Florida will have its next open house and song swap on Sunday, October 9th, 2004 from 5:00 p.m. to 9:00 p.m. for all those who want to combine friendship and a party with music.

The song swap will be at the home of Jerry & Lucy Lara, located in North Miami. Jerry & Lucy's Lara telephone number is: (305) 891-2881. Please RSVP for the address and directions. You may bring your contribution to a pot-luck dinner and any musical instruments you wish to play. You don't have to be a musician to enjoy this event! Enjoy meeting and greeting friends old and new.

FCSF Internet Membership Registration

You can now join the Folk Club of South Florida or renew your membership using our secure web site. Your credit card information is safe as we use PAYPAL for billing. Please go to our website at: <http://www.souflafolk.com/> and click on "Join us"

THE PREZ SEZ... Hurricanes And Us; Haiti; Board Meeting; Sick List

By **Barry J. White**

So you want to live in Miami-Dade County and plan shows in September?; man plans and God laughs. So we had to cancel not one but two events we produced. Discover Miami has been rescheduled to Dec 11. Hold the date! Jan Sabon! And Mundovibe's Benefit for Haiti Relief Funds sponsored by the City Of



North Miami will be rescheduled. Not to worry. They will both be done in fine style. It's great just to be involved in these events and to bring some of the areas best performers to the public.

While we have many people in our state who have suffered the people of Haiti are in a living hell and have absolutely no resources. Whole towns are gone. Probably over 4,000 dead. Life's essentials, scarce before, are non-existent now. Please send a check payable to Haiti Relief Funds to The Folk Club Of South Florida, 10001 SW 129 Terrace, Miami, FL 33176. I don't think we've ever seen it so bad in this hemisphere. We are our brothers' keepers.

Our next board meeting will be on Monday, October 25, 2004 at 7:30 P. M. at the Sun Inn Chinese Restaurant, 3045 Biscayne Blvd. Please let Dorothy Parker if you have an item for the agenda. All members of the Folk Club are welcome to attend.

Maria Barker is still mending from her auto accident. It has not been easy for her and it got worse before it got better. But she is a trooper and you always see that delicious smile no matter what is going on inside. Our thoughts and love are with you Maria as you fight back to full health.

There is a lot of good folk music and contra dancing going on in all three counties. Do take advantage of it and do take friends. We're still one of the best-kept secrets around, and best bargains.

NEWS

Grant Livingston

Call: 305-444-1230 - <http://www.grantlivington.com> for information about Grants gigs.

Rod MacDonald

Call 561-278-2653 for Rod's gigs this month or see his website: <http://www.rodmacdonald.net>

Open Mikes

Sunday nights at John Martin's Pub and Tuesday Nights at Sax Music Bar. Both events will start at 8pm. Contact: John Brown, gringo64@bellsouth.net
JohnMartin's Authentic Irish Pub And Restaurant, 253 Miracle Mile, Coral Gables, FL 33134 Phone: (305) 445-3777 www.JohnMartins.com

Irish Music at the Fields Pub

Great music and great Irish food. Call 954-964-5979 for info. 3281 Griffin Road, Dania Beach, FL 33312

PERFORMANCES

CONCERTS AT THE LUNA STAR CAFÉ

Luna Star Café presents regular acoustic concerts in North Miami, with an excellent program for this month. 777 N.W, 125 Court, North Miami, FL. Call Alexis at 305-799-7123 for details regarding the program of concerts, or see the concert schedule on the web at: <http://members.aol.com/luna13star/> Concerts start at 8:00PM and there is a usually a cover charge when there are performers.

Acoustic Open Mic – Saturday October 9th, 23rd, and 30th Hosted by **Sarah Walker**. Sign up is from 8 to 9 pm. Snake Church plays Happy Hour from 5 - 7 pm. No cover

Marie Nofsinger – South Florida Folk Club presents Acoustic Underground - Saturday 2nd **Snake Church** plays Happy Hour from 5 - 7 pm.

Grant Livingston with **NASI Songwriters critique** – Wednesday 6th, 7:30 pm. \$5 non-members

Karma – **Thursday 7th** - at 8 pm. \$6 International acoustic folk rock from South Africa <http://www.karma.za.net/>.

On the Edge – **Friday 8th** - Bluegrass Friday event \$7 (\$6 for members)

Jim Camacho – **Thursday 14th**

Ric Jon Band – **Friday 15th**

Mike Horton – **Saturday 16th**

MAIN STREET CAFÉ CONCERT SERIES

128 N. Krome Avenue, Homestead. Directions: From the Florida Turnpike, exit Campbell Drive, (exit #2) also known as SW 312 Street. Turn Left onto N. Krome Avenue. FLSR 997. Please call Laurie Oudin at 305-245-7575 to make your reservations. Web site: <http://www.mainstreetcafe.net> provides additional information. Shows start at 8:00 pm, cover charge is shown. Each Thursday Main Street Café presents its Open Mic with a featured act. Each Friday the Pathfinders present an evening of enjoyable music, unless a special guest is scheduled to present. Main Street Café's *'Up-Close and Personal'* Concerts are listed as follows:

Open Mic and featured act, every Thursday (free)

Tom Kimmel - 10/2

Open-Mic Night and featured act **Shawn Snyder - 10/7**

The Pathfinders - 10/8

Ruth Wyand - 10/9

Open-Mic Night and featured act **Jennifer Daniels - 10/14**

Chris Smither - 10/15

Great music sounds easy—as inexorable and inevitable as the change of seasons or sunrise and sunset. The bluesmen on the Delta and the Appalachian mountaineers made timeless art with just one voice, guitar and a stomping foot. And that is the root of the art of Chris Smither. Over the last decade Smither has released one gem of an album after another. His music draws as deeply from the blues as it does from American Folk music, modern poets and humanist philosophers. Chris Smither's audience, which hails from all global regions, perfectly reflects the diversity of his sources. Guitar-heads are drawn to Smither's Lightnin' Hopkins/John Hurt derived fretwork; spiritual seekers nod in recognition at the hard-won knowledge casually tossed off in his lyrics. And just plain music fans who have come to Smither on their own—or have learned of his music from the multitude of artists covering his songs—return again and again.

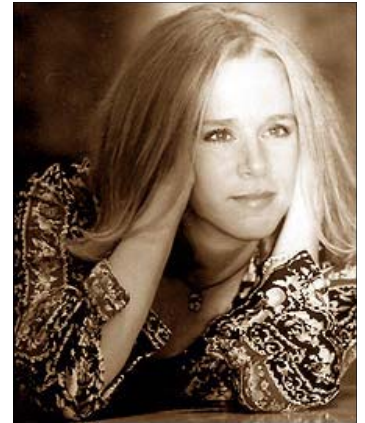
"Few artists are as classy as Chris Smither. His recorded work is never less than wonderful. Like this latest album, Chris Smither is a haunting presence that



once experienced never leaves you."—Sing Out! Magazine. "Smither is an American original, a product of the musical melting pot, and one of the absolute best singer-songwriters in the world. 'Train Home' is well worth taking."—Associated Press

The Diane Ward Band - 10/16

Diane Ward's new album, "The Great Impossible," is the culmination of a year's work, and is a masterful reflection of the Florida singer/songwriter's significant talent. It began as her 2 previous albums had started: with a musical emotion that surfaces before the story develops, inspiring the lyrics and the melody. "The Great Impossible" is



a personal take on the bigness of love, and the struggles to access it. To Diane, "This is the stuff that scars us and defines who we are.

The 15 song CD was produced by Diane and Jack Shawde, recorded at Elysian Fields Studios, and mastered at NY's Sterling Sound by Greg Calbi (Bruce Springsteen, Paul Simon, Aimee Mann, Ani DiFranco). The Diane Ward Band features Diane on vocals, guitar, and keyboards; Jack Shawde on lead guitars; Debbie Duke on electric and upright bass; and Howard Goldberg, on drums and percussion. The band will tour; both plugged and unplugged, in support of the new album (they recently opened for Ani DiFranco).

Diane believes that "each project has a purpose, and a special voice of its own. It has to contribute something spiritually and emotionally." 2003 heralds "The Great Impossible," the next step in the evolution of this gifted musical craftswoman and performer.

Open-Mic Night and featured act **Forest Sun - 10/21**

The Pathfinders - 10/22

We're About Nine - 10/23

Open-Mic Night and featured act **Amanda Garrigues - 10/28**

The Dreamsicles - 10/29

Halloween Party with The Pathfinders - 10/30

BUKSTEL- ENGELS HOUSE CONCERTS**Tom Prasada-Rao** with guest **Cary Cooper****Saturday October 30th, 8pm**

Tom has performed for the Bukstel house concert series twice and has thrilled the audience each time with his special gift of song and musicianship...He is an outstanding and AWARD WINNING singer and songwriter as well as a multi-instrumentalist. TPR as he is affectionately called, is a gifted musician and this will be a special



evening. He is an artist and we promise you a great night of original music that you won't forget.

Cary Cooper, also an award winning performer will join TPR for part of the evening. Many of you know these two exceptional acoustic singer/songwriters, so please join us for an evening of great music.

For reservations (required): Call: Ellen...954-880-0250 or E-mail: Ellen...ellen@bukstel.com...or Call: David+Leni...954 981-4141 or E-mail: David...DESUNBURST@aol.com. The number of seats is limited, so make your reservation soon \$15.00 artist donation in advance..... (directions are given when reservation is made). Beverages and dessert will be served.

BETTY'S BACK YARD CONCERTS**We're About 9 - Sunday October 24th, 5:00pm**

Consistently, reviews of 'We're About 9' are wrought with complexity as the reviewer does his/her best to bring out all of the magic that has brought such

success to this trio, and joy to their fans. The basics are these: This is a trio that is focused on complex songwriting and big wall-of-sound harmonies. They take turns on lead vocal, all sing on every song, and accompany their voices with thoughtfully conceived acoustic guitar and electric bass. Imagine, as Vance Gilbert put it, "some kind of a cross between The

Kingston Trio, The Four Tops, and The Story," with a unique brand of performance and songwriting that transcends all of the above. Katie Graybeal, Pat Klink and Brian Gundersdorf exploded on to the folk circuit in 2003 with an unequivocal buzz, a load of festival appearances and a relentless arsenal of charm, energy and intelligence. In 2003 and 2004 alone, We're About 9 was selected to perform at dozens of festivals including The Falcon Ridge Folk Festival, Philadelphia Folk Festival, Clearwater Revival Folk Festival, Green River Festival, The Mountain Stage New Song Festival, and many more.

"The twenty-something threesome's abilities as songwriters and performers is downright superb. Their material is literate, tasteful and often charmingly wistful, and their musicianship and vocal harmonies are world-class."—Graham Weekly Album Review, WVIA-fm

There will be a potluck supper starting at 4:00pm and the music will start at 6:00pm. Artist donation \$15.00. Please call 305-595-1901 for reservations or e-mail Betty at: _f@bellsouth.net.

GLADE'S EDGE HOUSE CONCERTS**Common Bond - Sunday, Oct. 24th, 7:00 PM**

Common Bond is the acclaimed acoustic partnership of female singer-songwriters Mary Beth de Pompa and Ashley Miller. Serving up an eclectic blend of blues-edged



folk/rock, the DC-based duo has been compared to everything from the Queen of Blues Bonnie Raitt to Indigo Girls to the Barenaked Ladies.

Pot luck dinner at 6:30. Reservations suggested. Artist Donation: \$10. Please email gladesedge@yahoo.com or call Dave Cambest, at 954-742-9236 for reservations. www.geocities.com/unpluggedconcerts

THE LABYRINTH CAFÉ**Pete Mayer - Saturday, October 9th 7:30 PM**

Peter Mayer writes songs for a small planet-songs about interconnectedness and the human journey; songs about the beauty and the mystery of the world.

Whimsical, humorous, and profound, his music takes you up mountains, across oceans, into space, and back home again. A native of Minnesota with a background in Theology, Peter is not big on love songs, but prefers delving into science, nature, and things spiritual.
<http://www.petermayer.net/blueboat/>



"I'm a huge Peter Mayer fan, but only when I don't feel like killing him for being so good. I love Peter's work, though it irritates me that he plays so much better than I do. If I rocked half as hard as Peter does, I'd own the world by now." --Janis Ian, Singer/Songwriter

Opening act: New Last Rights

Unitarian Universalist Church of Ft. Lauderdale, 3970 NW 21ST AVE. FT Lauderdale. Take I 95 to Oakland Park Blvd west exit. Go to light at NW 21 Ave & turn right. Just past the first light, church will be on the right. Reservations requested Myra (954) 779-2240 Info: day of concert 954-240-6313 or email myrafly@yahoo.com

NICK ANNIS Notes from the Road

Traveling musician and songwriter Nick Annis writes about life and musical inspiration on the road. Email him at: nick@nickannis.com



Clyde's Oktoberfest on a chilly Sunday afternoon, a cold wind blows through the open sides of the Reston Town Center Pavilion, freezing the bare knees of a waiting group of traditional Bavarian dancers. The courtyard is filled, loud with the din of diners, as waiters with walkie-talkies radio orders back to the grill area. Easily 1000 people fill 2 acres of long tables, their attention divided between their plates and the Redskins game being shown on two projection TVs.

It's my second day as a biojukebox, taking requests, filling the breaks and changeovers for five different Oom-pah bands, and I've heard the Pennsylvania Polka now more times than Bill Murray did in Groundhog Day.

A woman walks up to me with inebriated deliberation, spilling beer on my guitar as she leans in to be heard, asks for any song from "The Sound of Music". I want to tell her I don't know any, but I'm wary of further conversation, as she still has more beer. I herd the two dozen children gathered around the dance stage and start them off, "Do, a deer...", and the kids sing along. I finish my set and introduce the dancers.

Got back to DC last Saturday, running ahead of Ivan, in time to play the Takoma Park Folk Festival. Thursday, we represented David Eisner and the IMT at a showcase that included acts presented by The Kennedy Center, The Birchmere, Vic's Corner, Mofolk, and Uptown Concerts. Vic & Reba told us that they had wanted to present us, but found out that IMT was already doing so. I guess we're doing something well. The Clyde's gig came in unsolicited, I'd played their Strawberry Festival in May and they called to ask me back for Oktoberfest. As a performer, this is the best compliment I could wish for, the return engagement.

The dancers end their set just as the Redskins recover a fumble, and the crowd goes nuts, cheering and jumping out of their chairs. The troupe thinks the applause is for them and does an encore. When they finish, I take to the dance stage after them and strum random chords, singing a play by play of the football game, dodging small children while the new band sets up on stage behind me.

Friday I practiced with Chris Chandler for our gig on Oct 3, a Street Festival in Takoma Park. He fits a poem into the spaces of "Background Scenery", another woven into and around "Land of the Free". He is clear about how he hears it, certain in his direction, and I just go along for the ride. I am backup, my songs just frames for his art and I am honored to share them so.

The new band, The Continentals, is almost ready, so I call for requests on my last song, and the crowd picks "Country Roads". All those Pathfinder between sets pay off. "Almost heaven,..." and hundreds of people are singing, and when the second verse begins, keyboards start in behind me, then drums, sax, and lead guitar. Then four amplified voices in harmony on the chorus. It is an Oktoberfest moment, one that can only be shared with 1000 people whose gathering purpose was to drink lots of beer. Women pour out of the crowd and dance around me, the band is laughing on stage behind me, we have become something new, we are one, I have found that elusive connection.

Either that or the Redskins recovered another fumble.

CALENDAR OF EVENTS

Additional events not included in the main concert list are listed here. Please send information and corrections for the *Calendar of Events* to John Barker via email at john@floridamusic.org

Friday, October 1st

Live Music at Main Street Café (See Concerts List for details)
Adrian Peever & Mark Kane at Molly Blooms: 166 Sunny Isles Blvd, where 826 meets A1A (305-948-3512) 9PM to 1AM.

Saturday, October 2nd

ACOUSTIC UNDERGROUND – SEE PAGE 1
Chocolate Moose, 9118 S.R. 84 (I-595 & Pine Island Road) Davie. (954-474-5040) Open Mike, 8-12.00 pm
Main Street Café – Live music with special guest, 305-245-7575

Sunday, October 3rd

Bluegrass Under the Trees, Ives Optmist Club- \$3;00 1511 NE 207 St. N. Miami Beach Tel. 954-741 5997. 1:00 to 6:00pm
Open Mike at John Martins 253 Miracle Mile 305-445-3777

Tuesday, October 5th

Music Industry Networking Night 7:00pm to 9:00pm, One Night Stan's, 2333 Hollywood Boulevard, Hollywood, Fl. 954-929-1566.
Chocolate Moose, 9118 S.R. 84 (I-595 & Pine Island Road) Davie. Tel. 954-474-5040 Open Mike, 8-11 pm

Wednesday, October 6th

Chocolate Moose, 9118 S.R. 84 (I-595 & Pine Island Road) Davie. (954-474-5040) Open Mike, 8-11 pm

Thursday, October 7th

Open Mike at Main Street Café
Backstage, 12201 NW 7th Avenue, North Miami, Tel. 305-688-5106. Acoustic Jam Session, Jomo, master Mbira-player.

Friday, October 8th

BLUEGRASS FRIDAY – SEE PAGE 1
Broward Folk Club open mike, Webby's Neighborhood Pub & Grub, 5219 West Broward Blvd in Plantation. Tel. 954-587-2147.
Live Music at Main Street Café (See Concerts List for details)
Adrian Peever & Mark Kane at Molly Blooms: 166 Sunny Isles Blvd, where 826 meets A1A (305-948-3512) 9PM to 1AM.

Saturday, October 9th

Luna Star Café, 775 NE 125 Street, North Miami, Open Mic, 305-892-8522.
Chocolate Moose, 9118 S.R. 84 (I-595 & Pine Island Road) Davie. (954-474-5040) Open Mike, 8-12.00 pm
Main Street Café – Live music with special guest, 305-245-7575

Sunday, October 10th

Open Mike at John Martins 253 Miracle Mile 305-445-3777

Tuesday, October 12th

Chocolate Moose, 9118 S.R. 84 (I-595 & Pine Island Road) Davie. Tel. 954-474-5040 Open Mike, 8-11 pm

Wednesday, October 13th

Chocolate Moose, 9118 S.R. 84 (I-595 & Pine Island Road) Davie. (954-474-5040) Open Mike, 8-11 pm

Thursday, October 14th

Open Mike at Main Street Café.
Backstage, 12201 NW 7th Avenue, North Miami, Tel. 305-688-5106. Acoustic Jam Session, Jomo, master Mbira-player.

Friday, October 15th

Live Music at Main Street Café (See Concerts List for details)
Adrian Peever & Mark Kane at Molly Blooms: 166 Sunny Isles Blvd, where 826 meets A1A (305-948-3512) 9PM to 1AM.

Saturday, October 16th

Luna Star Cafe features a performance by a local or national artist, Tel. 305-892-8522.

Contra Dance at the Davie Womens Club. No partner is needed. Instruction at 7:30 p.m., dance starts at 8:00 pm. \$5.00 donation, bring a snack to share:
http://pages.prodigy.net/marty_spencer/fiddlers-grove/everglad.htm - contact Marty Spencer 954-270-9764.

Unitarian Universalist Church of South Miami. Open mike and coffee house. Mike Malone 305-662-4003

Chocolate Moose, 9118 S.R. 84 (I-595 & Pine Island Road) Davie. (954-474-5040) Open Mike, 8-12.00 pm

Main Street Café – Live music with special guest, 305-245-7575

Sunday, October 17th

Open Mike at John Martins 253 Miracle Mile 305-445-3777

Tuesday, October 19th

Chocolate Moose, 9118 S.R. 84 (I-595 & Pine Island Road) Davie. Tel. 954-474-5040 Open Mike, 8-11 pm

Wednesday, October 20th

Chocolate Moose, 9118 S.R. 84 (I-595 & Pine Island Road) Davie. (954-474-5040) Open Mike, 8-11 pm

Thursday, October 21st

Cancun Mexican Grill, 1828 Harrison St., Hollywood. Songwriters Showcase 7:30 pm. Open Mike, 9:00p.m. Featured Songwriters, 954-922-8515. Open Mike at Main Street Café.

Backstage, 12201 NW 7th Avenue, North Miami, Tel. 305-688-5106. Acoustic Jam Session, Jomo, master Mbira-player.

Friday, October 22nd

Live Music at Main Street Café (See Concerts List for details)
Adrian Peever & Mark Kane at Molly Blooms: 166 Sunny Isles Blvd, where 826 meets A1A (305-948-3512) 9PM to 1AM.

Saturday, October 23rd

Luna Star Cafe open mic, Tel. 305-892-8522.
Chocolate Moose, 9118 S.R. 84 (I-595 & Pine Island Road) Davie. (954-474-5040) Open Mike, 8-12.00 pm
Main Street Café – Live music with special guest, 305-245-7575

Sunday, October 24th

Open Mike at John Martins 253 Miracle Mile 305-445-3777

Tuesday, October 26th

Chocolate Moose, 9118 S.R. 84 (I-595 & Pine Island Road) Davie. Tel. 954-474-5040 Open Mike, 8-11 pm

Wednesday, October 27th

Chocolate Moose, 9118 S.R. 84 (I-595 & Pine Island Road) Davie. (954-474-5040) Open Mike, 8-11 pm

Thursday, October 28th

Open Mike at Main Street Café.
Backstage, 12201 NW 7th Avenue, North Miami, Tel. 305-688-5106. Acoustic Jam Session, Jomo, master Mbira-player.

Friday, October 29th

Live Music at Main Street Café (See Concerts List for details)
Adrian Peever & Mark Kane at Molly Blooms: 166 Sunny Isles Blvd, where 826 meets A1A (305-948-3512) 9PM to 1AM.

Saturday, October 30th

Luna Star Cafe open mic, Tel. 305-892-8522.
Chocolate Moose, 9118 S.R. 84 (I-595 & Pine Island Road) Davie. (954-474-5040) Open Mike, 8-12.00 pm
Main Street Café – Live music with special guest, 305-245-7575

Sunday, October 31st

Open Mike at John Martins 253 Miracle Mile 305-445-3777
Broward Folk Club Open House (Free). Song Swap, jam, covered dish party. Contact Janis Rubel 561-487-0253 or grubel@interpoint.net

MICHAEL STOCK**on Folk and Acoustic Music**

WLRN radio presenter, Michael Stock's monthly column about South Florida's folk and acoustic music scene. Listen to Michael's show every Sunday from 1:00 to 4:00 PM on WLRN, 91.3 MHz. Contact Michael at : 305-995-2220, or email: mstock@wlrn.org



What a tough month. With all the hurricanes affecting us, we did not have time for much folk music. Hope all of you came out okay.

I frequently get asked to write blurbs for artists to use as part of their promo material. "The best thing I have heard in a long time" "Music that is unique and evolved and worth listening to" "Inspired and clever, a mystery why fame has not transpired", "Music that only a mother would love ", stuff like that.

I have not done that many of these things because it makes me feel uncomfortable. Just how valid and honest are these many quotes? How biased are the quote makers? Well, I do do a radio show and while I am very lucky to have this opportunity to share my love of folk music, just like Spiderman, it does come with some responsibility.

I take it very seriously to do the best show and play the best songs every week. I take very seriously the artists who sent me CDs who have devoted their life to the preservation of this art form. I consider myself first a fan of folk music, and as a fan, I know what I like. I get a feeling in my gut to what is good and bad and rather than trying to defend my taste, I just play that song on the radio, endorsement enough, right?

Thinking about it now, what harm could come if I write a press blurb? I want to help these artists, so as long as it is positive, why not?

Fundraiser for Folk & Acoustic Music on Oct 10th. Please help us achieve our goals. November 7 a special exploring the greats of boogie-woogie Piano.

ON THE WEB**Internet Event Listing**

For a listing of upcoming South Florida events see the **GotFolk Calendar of Events**,
<http://gotfolk.cus.com/calendar/calendar.pl>

House Concert Websites

Glades Edge: <http://www.geocities.com/gladesedge/>
Hearts Desire: <http://www.heartsdesireconcerts.com/>
Singers: <http://www.singerfolkmusic.com/>
Barkers: <http://www.floridamusic.org>

**ARTS AT
St. JOHN'S
CHURCH**

**4760 Pine Tree Drive,
Miami Beach**



Contact **Carol Hoffman-Guzman** for
information about upcoming folk music
concerts: **305-613-2325**

*The***Luna Star Cafe**

Bored with the average? Come feed your mind as well as your face. We offer fine food, exotic coffees, beers, ales, ciders, and fruit & spice beverages, along with the best in art, poetry, story-telling, folk and traditional music, blues and jazz. It's a living room atmosphere, and a place for stimulating conversation. 775 NE 125th St. - North Miami, FL - (305) 892-8522. 10am to Midnight Tue. through Thu. - Fri. and Sat. - 10am to 1am

FOLK CLUB OF SOUTH FLORIDA

Is a non-profit organization (501-C) and member of The North American Folk Music and Dance Alliance. We proudly support Friends of Florida Folk and the radio station WLRN in Miami, Florida.

President and director **Barry J. White**, 305-251-1960; bwtamia@bellsouth.net
 Vice-President and director **Maria Barker**, 305-981-3760; maria@floridamusic.org
 Secretary and director **Dorothy Parker**, 305-663-9296; dfp_mail@yahoo.com
 Treasurer and director **Jane Matthews**, mommamatt@aol.com
 Director Grant Livingston, 305-444-1230; grant@grantlivingston.com
 Director James Fishman, jmflaw@aol.com
 Director John Barker, 305-981-3760; john@floridamusic.org
 Director Andy Susman, andrewsusman36@hptmail.com
 Members-at-large: George Blackwell Linda Singer Betty Friedrichsen
 Betsy Graber Michael Stock Charles Rathburn
 Valerie Caracappa

Newsletter Editors: John and Maria Barker: 305-644-9111 john@floridamusic.org

The **FCSF Website** is maintained by Webmaster: **George Blackwell**.

Folk Club of South Florida: <http://www.souflafolk.com>
 Broward Folk Club: www.browardfolkclub.com
 Local Folk Music Resources: www.gotfolk.com
 North American Folk Music and Dance Alliance: www.folk.org
 South Florida Folk Festival: www.southfloridafolkfest.com
 Barker House Concert Series: www.floridamusic.org
 Palm Beach Folk Club: <http://groups.yahoo.com/group/pbfcchat>

WEBSITE LINKS

MEMBERSHIP APPLICATION

PLEASE FILL OUT MEMBERSHIP INFO AND MAIL YOUR TAX-DEDUCTIBLE CHECK
 Made out to:

FOLK CLUB OF SOUTH FLORIDA
10001 SW 129 Terrace Miami, Florida 33176

Or use our secure on line membership registration
<http://www.souflafolk.com/>
 Click on "Join us"

Annual membership entitles you to a special rate on concerts, a monthly newsletter and admission to our annual party featuring complimentary food and music. Please choose the membership that is best suited for you and your family.

INDIVIDUAL \$15.00 -- FAMILY \$20.00 SUPPORTING \$35.00 -- SUSTAINING \$75.00 SPONSOR \$125.00

NAME _____
 ADDRESS _____
 PHONE _____
 EMAIL _____
 CITY _____ STATE _____ ZIP _____

THE FOLK CLUB OF SOUTH FLORIDA
1415 Mercado
Coral Gables, Fl. 33146

First Class Mail
Address Correction Requested

DON'T MISS:

- **ACOUSTIC UNDERGROUND AT LUNA STAR CAFE, Saturday, October 2nd**
- **BLUEGRASS FRIDAY, Friday, October 8th**
- **FOLK AND ACOUSTIC MUSIC WITH MICHAEL STOCK, SUNDAYS 1:00 - 4:00 PM, WLRN 91.3 MHz**